

IncuCount RS-IC-100

Automatic Colony Counter



REVOLUTIONARY SCIENCE

Manufacturer of Precision Laboratory Equipment

Introduction:

The IncuCount counts hundreds of colonies on a Petri dish in less than a single second. It also measures the inhibition zones of antibiotic reaction samples.

Using new patent pending technology, the IncuCount is the only automatic colony counter that can also be used inside an incubator to monitor growth or reactions in a Petri dish, film or plate! See figure 1.

- Automatically monitors the growth and multiplication of colonies
- Automatically measure and monitor inhibition zones
- Sequential imaging within an incubated environment
- Designed to fit inside most incubators
- Automatic emailing capability
- Animate growth on a Petri plate using sequential imaging
- Sophisticated yet easy to use software!

Features:

I. Colony Counting:

Counting colonies has traditionally been performed manually. The IncuCount automatically takes care of the counting for you.

When the image appears on the computer, simply click the count button located in the right control panel of the computer screen. In the image panel colonies will instantly change to green, while those smaller will appear red. Sensitivity and minimum size are easily adjusted. See figure 2.

The IncuCount can also count up to three different colony colors simultaneously.

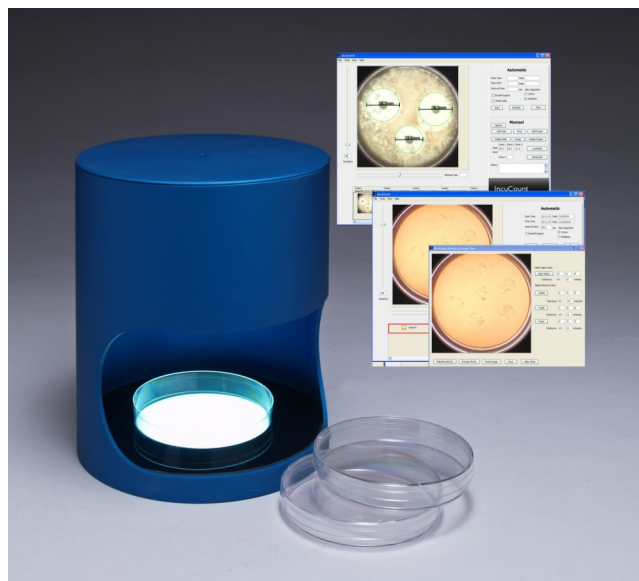


Fig. 1: IncuCount 100

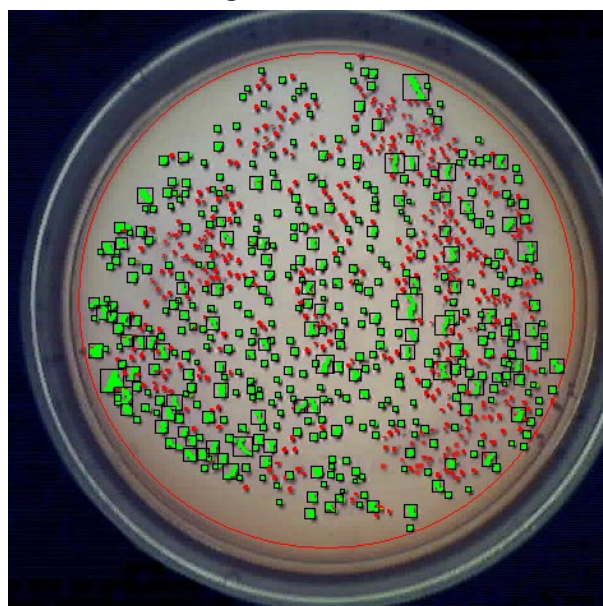


Fig. 2: Automatic colony counting

REVOLUTIONARY SCIENCE

17319 Lake Blvd.
Shafer, MN 55074
Toll Free: (800) 775-7942
Technical Support: (651) 674-3112
Fax: (775) 218-7015

E-mail: Support@revsci.com
Website: www.revsci.com

2. Inhibition Zones:

The IncuCount is a near necessity for any researcher studying antibiotic reactions.

To measure the inhibition zone with the IncuCount click Antibiogram in either the tools menu or control panel. This selection will appear in both locations. The control panel will display the controls suitable to inhibition zone measurements. With a click of the find button the program will automatically locate all antibiotic discs and determine the diameter of the zone of inhibition. See figure 3.

In some cases where visibility is poor, due to agar color or unusual growth patterns, a manual adjustment to the measurement may be required. This can be done by simply right-clicking and dragging the mouse, release button when the outside edge of the zone of inhibition is reached. A blue circle will appear indicating the new zone of inhibition size. See figure 4.

3. Sequential Monitoring in Incubated Environment (patent pending):

The IncuCount is the only automatic colony counter that allows the monitoring of the bacteria, antibiotic or mold inside an incubated or refrigerated environment. With this new patent pending technology the software enables the monitoring of specimens upside down or right side up.

This is simply done by entering a start date and an end date. The software can also have results automatically emailed to users on a regular basis.

The IncuCount captures images at specific time intervals and fully analyzes the colony count, growth and many other reactions that may occur during the growth process. This can be done whether growing mold, bacteria or measuring inhibition zones! See figure 5.

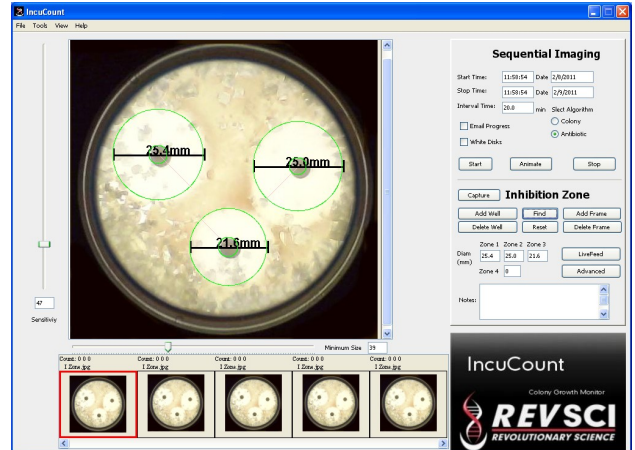


Fig. 3: Inhibition zone measurements

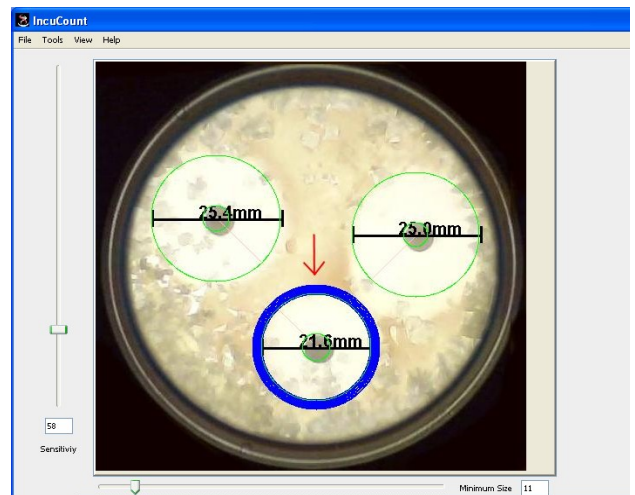


Fig. 4: Adjusted zone of inhibition

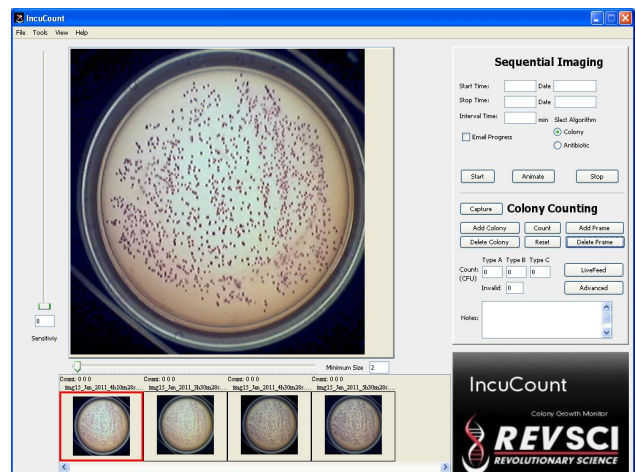


Fig. 5: Sequential Imaging

REVOLUTIONARY SCIENCE

17319 Lake Blvd.
 Shafer, MN 55074
 Toll Free: (800) 775-7942
 Technical Support: (651) 674-3112
 Fax: (775) 218-7015

E-mail: Support@revsci.com
 Website: www.revsci.com

Advanced Features:

I. Making a Movie (Animate):

This software can create movies from the captured images. This is done by animating the sequential images and saving them in .avi or .mov format. Frames per second can easily be demanded. Movies can be viewed in an appropriate media player, or by clicking the preview movie button in the program. See figure 6.

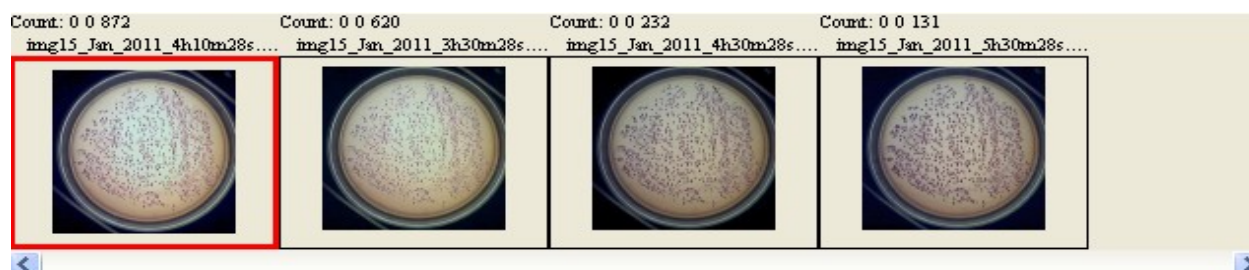


Fig. 6: Animation film strip

2. Zoom:

To zoom on a particular feature in the Petri dish make a box around the feature with the mouse by clicking where the corners should exist. To finalize the zoom area, right click on the corners and a blown up image of the selected area will appear in the image panel. See figure 7.

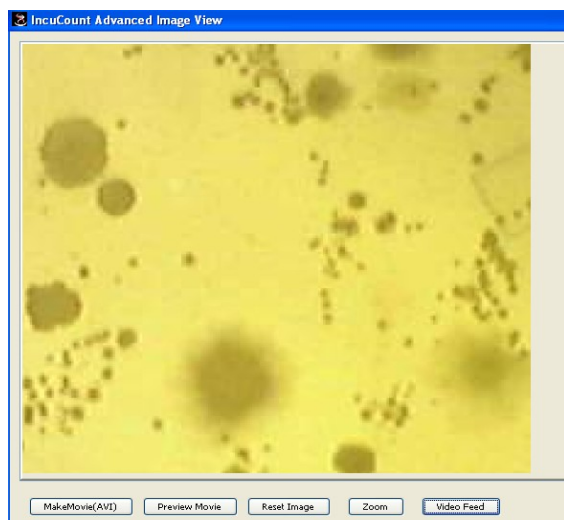


Fig. 7: Zoom

3. Exclusion Zones:

The IncuCount also makes it easier to exclude certain zones. Simply left click around the desired region to be excluded and right click on the final point to make a box around the zone. The box will become shaded and the inside region will not be included in the results. See figure 8.

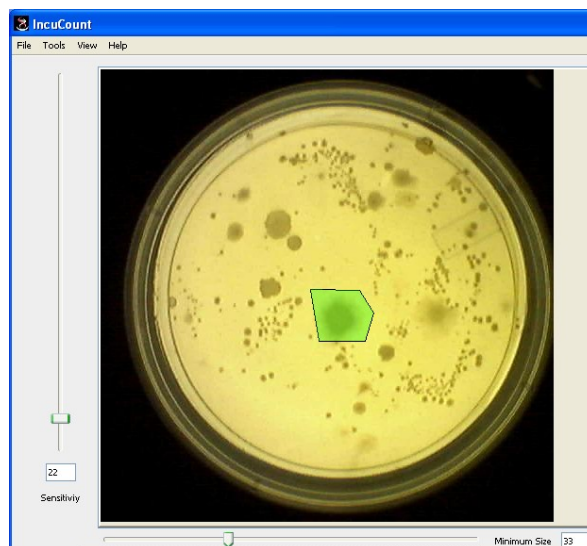


Fig. 8: Excluded area in green

REVOLUTIONARY SCIENCE

17319 Lake Blvd.
 Shafer, MN 55074
 Toll Free: (800) 775-7942
 Technical Support: (651) 674-3112
 Fax: (775) 218-7015

E-mail: Support@revsci.com
 Website: www.revsci.com

4. Export to Excel

The software also enables export of data to excel. The spreadsheet will be saved as a Comma Separated Value (.csv) file which can be opened with spreadsheet software such as, Open Office calc or Microsoft Office Excel®. Select export to Excel from the file menu and type desired name into the supplied box. See figure 9.

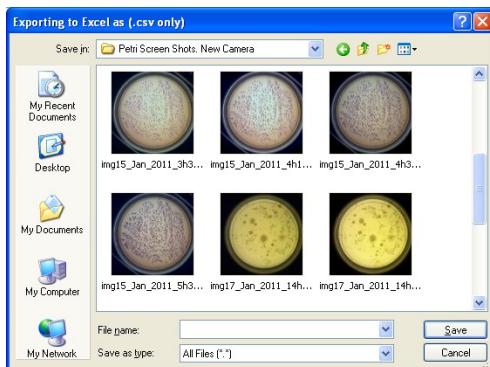


Fig. 9: Export to Excel

Conclusion:

The IncuCount colony counter provides an easy, quick and accurate method to automatically count colonies, monitor bacterial growth, measure/monitor zones of inhibition and even create animations of incubated or refrigerated growth. The IncuCount provides everything needed in a colony counter at an affordable price! Contact your supplier, visit our website or call today for more information on the IncuCount RS-IC-100.

Specifications:

Model Number:	RS-IC-100
Power Requirements:	100-240 VAC 50/60 HZ 1.5 amps
Net Weight:	4lb. (shipping weight 11lb.)
Dimensions:	7.25" tall x 6.25 " diameter
Lights:	High intensity LED (top & bottom)
Computer connection:	USB
Camera:	High quality 10 megapixel HD digital camera, Carl Zeiss Optics
Petri dish capacity:	Up to 100mm, including 3M Petri Film
CE/UL certifications:	UL approved LED lights, power supply, & camera

System Requirements:

Hardware:	Computer, CD ROM, USB interface
Memory:	Min 512mb, 500mhz
Operating System:	Windows XP, Vista, Windows 7
Hard Drive Space:	Min 2 GB of dedicated space
Warranty:	2 year, repair or replacement

REVOLUTIONARY SCIENCE

17319 Lake Blvd.
 Shafer, MN 55074
 Toll Free: (800) 775-7942
 Technical Support: (651) 674-3112
 Fax: (775) 218-7015

E-mail: Support@revsci.com
 Website: www.revsci.com

