

Saniclave RS-SC-200

Steam Autoclave



Revolutionary Science

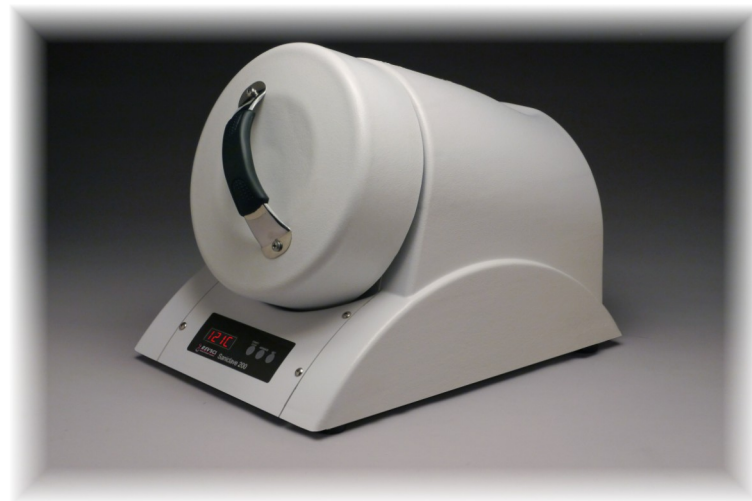
Manufacturer of Precision Laboratory Equipment

With a digital timer, printer connection and dry mode the compact and versatile Saniclave 200 can sterilize wrapped or unwrapped solid, mated, hinged or knurled instruments without fail. A front loading, corrosion resistant, stainless steel chamber and door make this steam sterilizer extremely easy to load and clean. The Saniclave 200 delivers exceptional performance at an affordable price. Two year warranty included.

The Saniclave is not FDA approved.

RS-SC-200 specifications

Pressure:	15-18 psi
Internal Temperature:	121-124°C
Temperature Low Tolerance:	121°C
Temperature Upper Tolerance:	124°C
Preheat Mode:	Automatic
Sterilization Time:	30 minutes
Dry Mode:	30 minutes
Printer:	Zebra LP2844 recommended (printer not included)
Capacity:	12.5L
Maximum Load Configuration:	3.5 lbs
Net Weight:	9.1kg (20lbs)
Power Requirements:	120 VAC, 500 W, grounded cord
Display:	Digital time temperature and pressure
Durability:	Stainless steel chamber and rugged ABS enclosure
Dimensions:	
External:	40.6cm tall x 34.3cm wide x 53.3cm deep 16" tall x 13.5" wide x 21" deep
Internal:	22.9cm diameter x 30.5cm tall 9" diameter x 12" tall
Safety Approvals:	IEC compliant, CE marked



Revolutionary Science

17319 Lake Blvd.
Shafer, MN 55074
Sales: (651) 674-3109
Fax: (775) 218-7015

E-mail: Sales@revsci.com
Website: www.revsci.com

